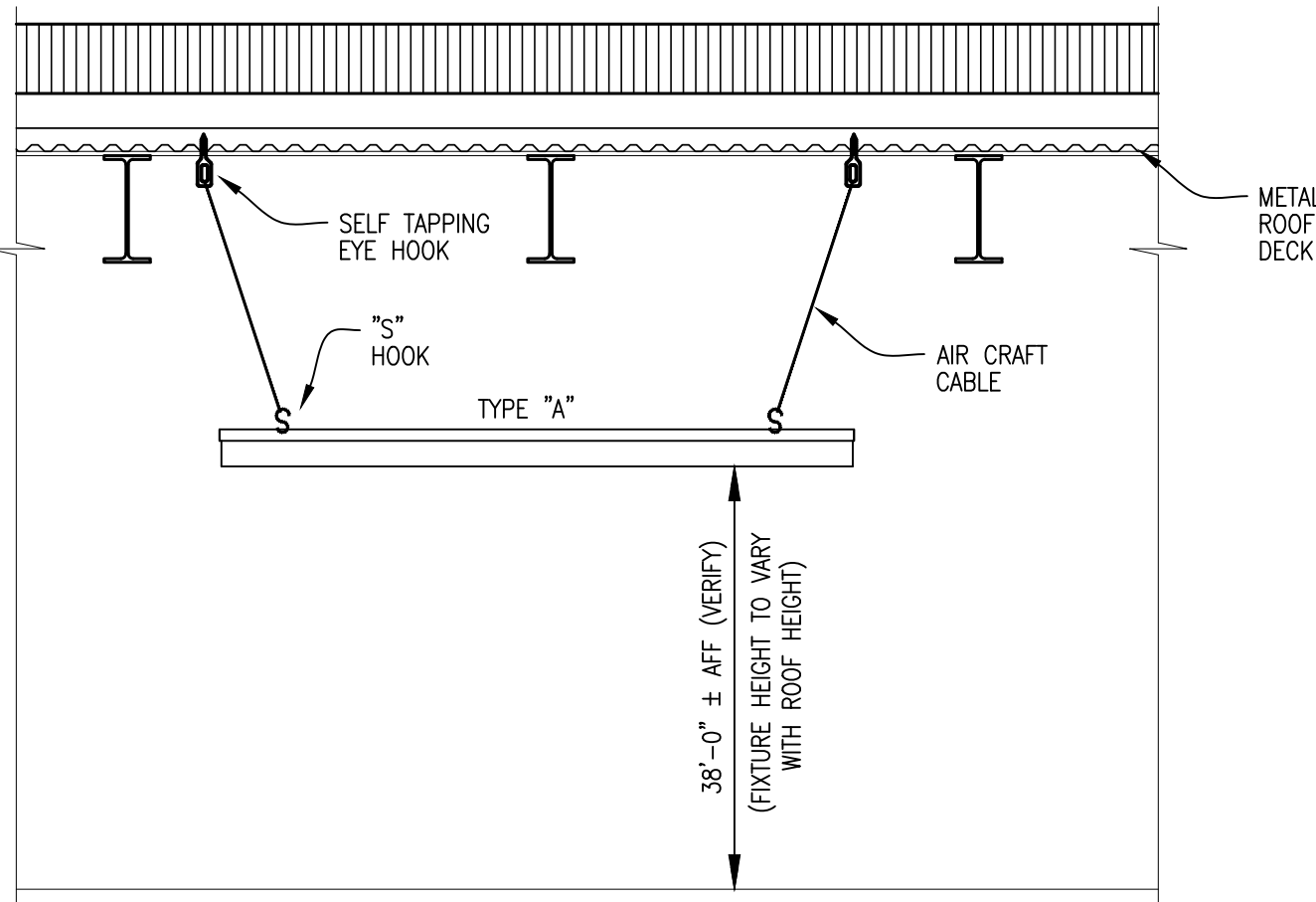
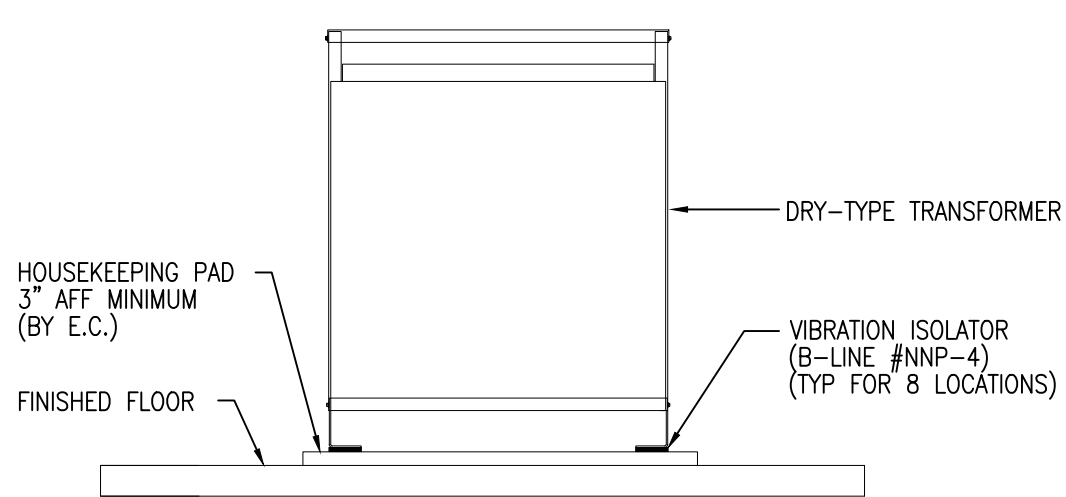


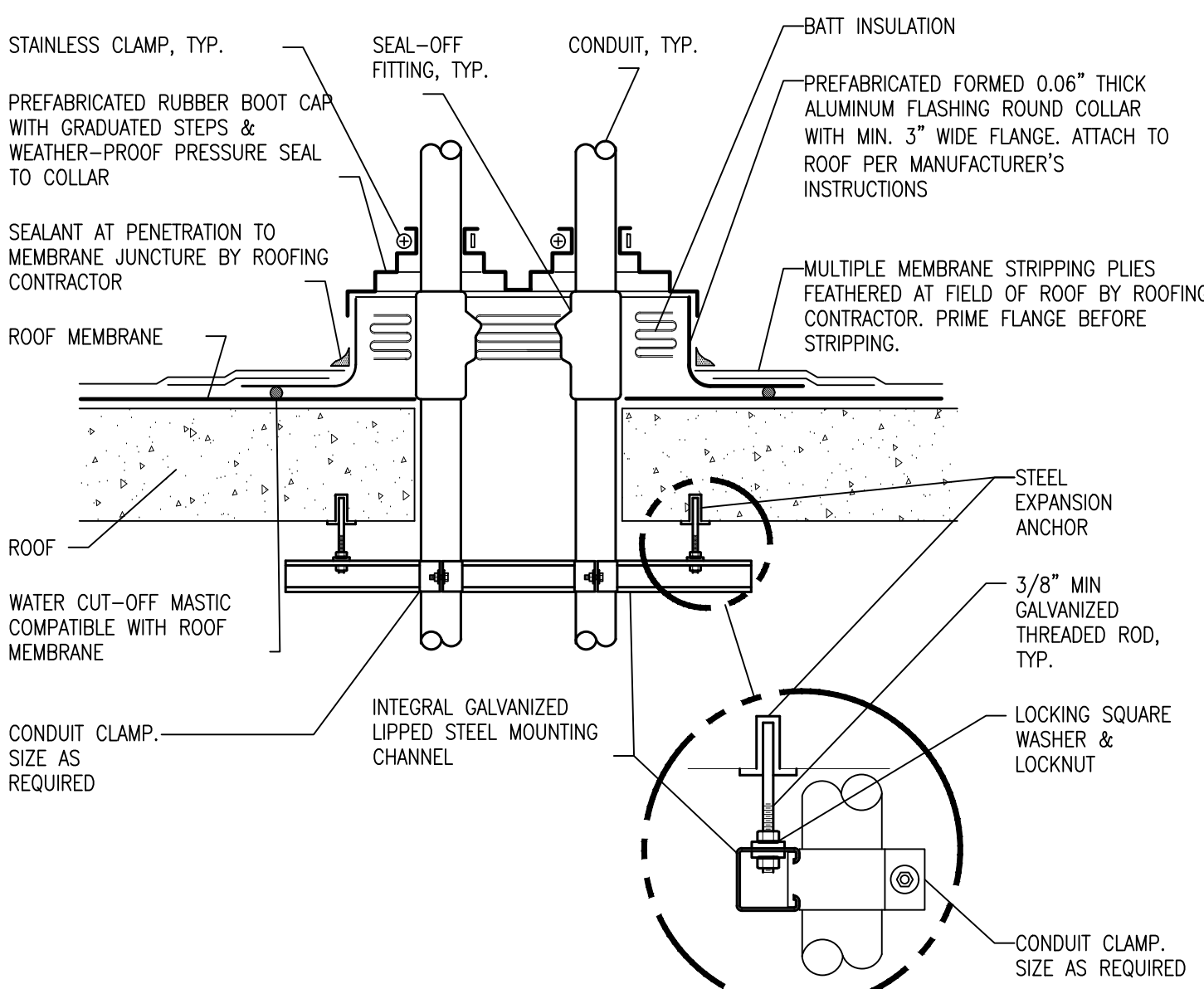
TYPICAL EXHAUST FAN ON ROOF
SCALE: NONE



FIXTURE TYPE "A" MOUNTING DETAIL
SCALE: NONE

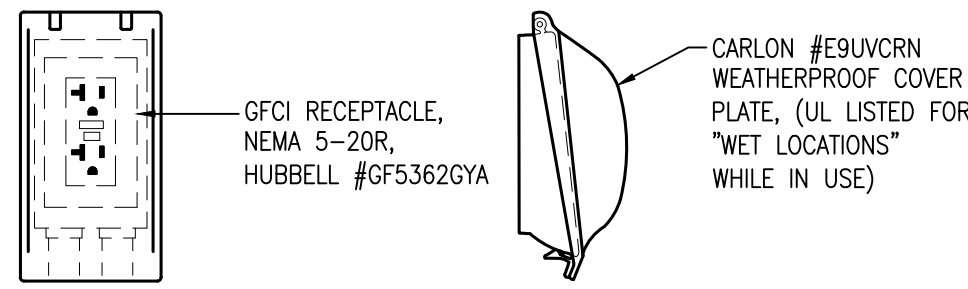


TRANSFORMER FLOOR MOUNTING DETAIL
SCALE: NONE

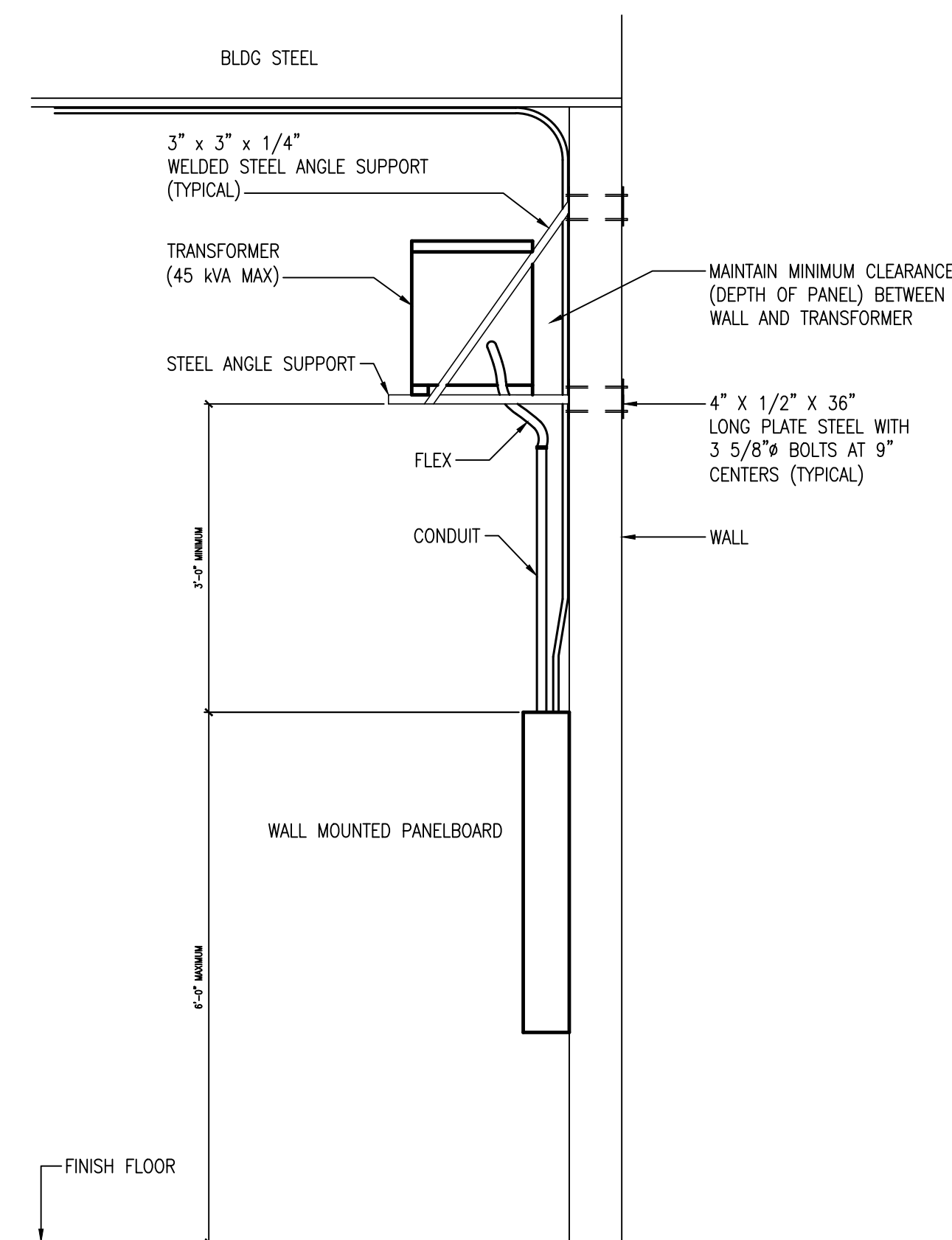


TYPICAL ROOF PENETRATION DETAIL
SCALE: NONE

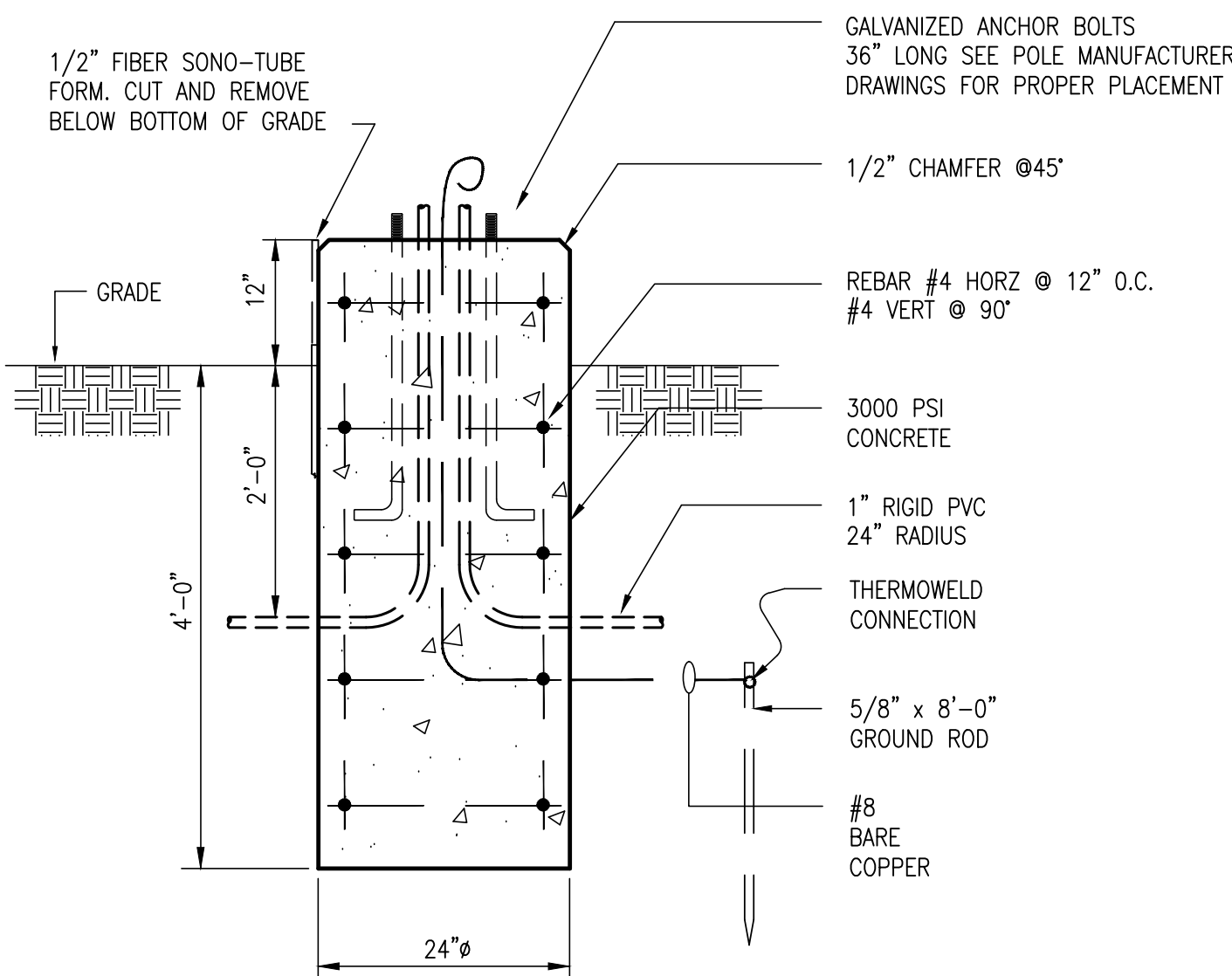
- NOTES:
1. MAINTAIN A MINIMUM CLEARANCE OF 12" [308mm] ON ALL SIDES OF ROOF PENETRATION FROM WALLS, CURBS, AND OTHER PROJECTIONS TO FACILITATE PROPER FLASHING.
 2. FLANGES OF ADJACENT FLASHINGS SHALL NOT BE CUT OR OVERLAPPED.
 3. VERIFY ROOF & STRUCTURAL SYSTEM WITH ARCHITECT & STRUCTURAL ENGINEER.
 4. COORDINATE FLASHING INSTALLATION WITH ROOFING CONTRACTOR TO ENSURE PROPER METHODS & MATERIALS ARE USED TO MAINTAIN ROOF WARRANTY.



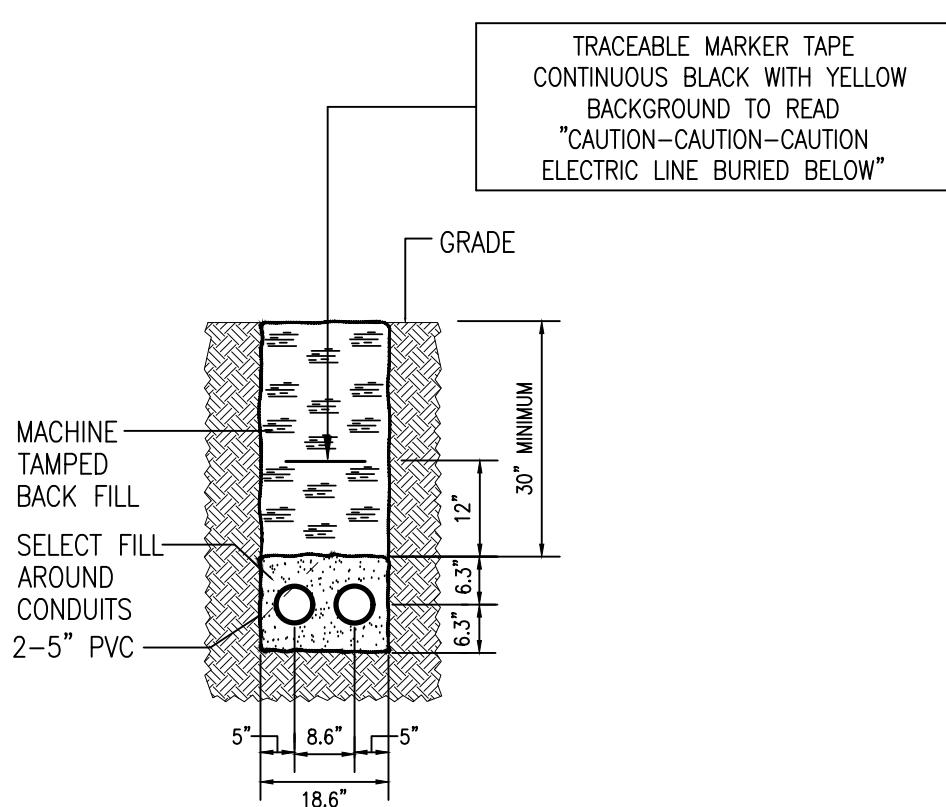
EXTERIOR RECEPTACLE DETAIL
SCALE: NONE



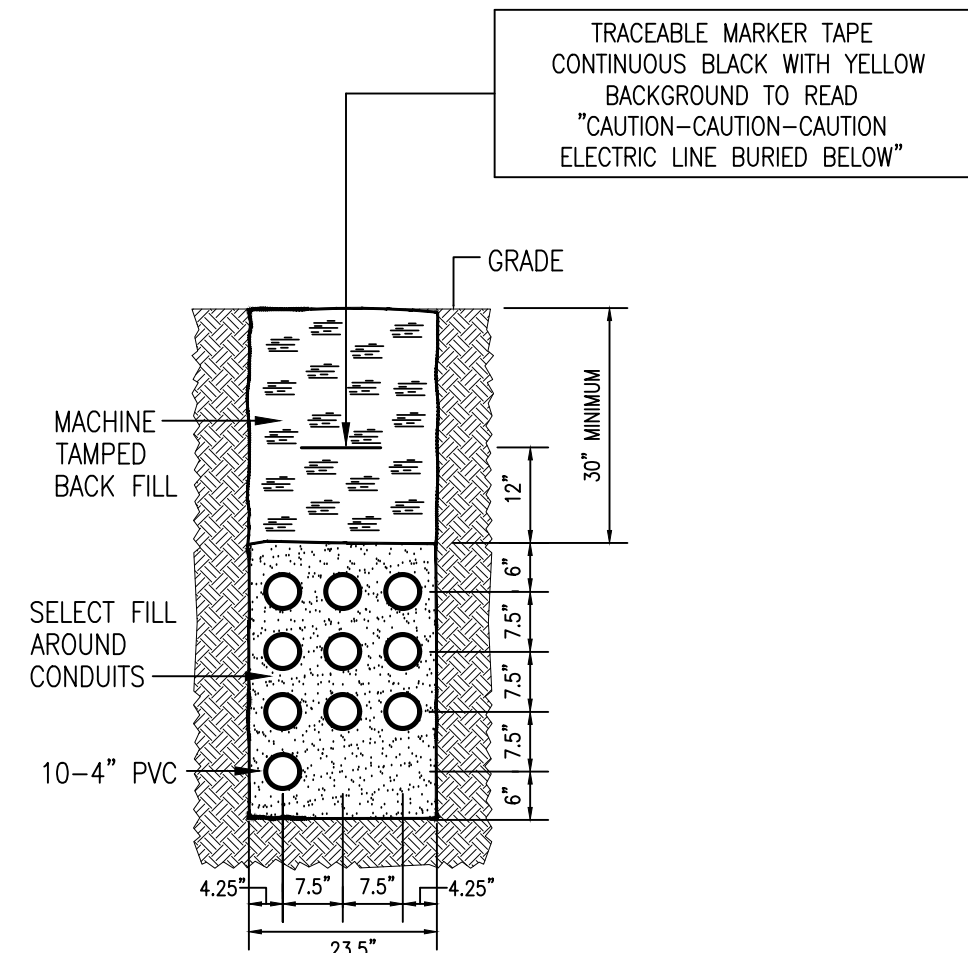
TRANSFORMER WALL MOUNTING DETAIL
SCALE: NONE



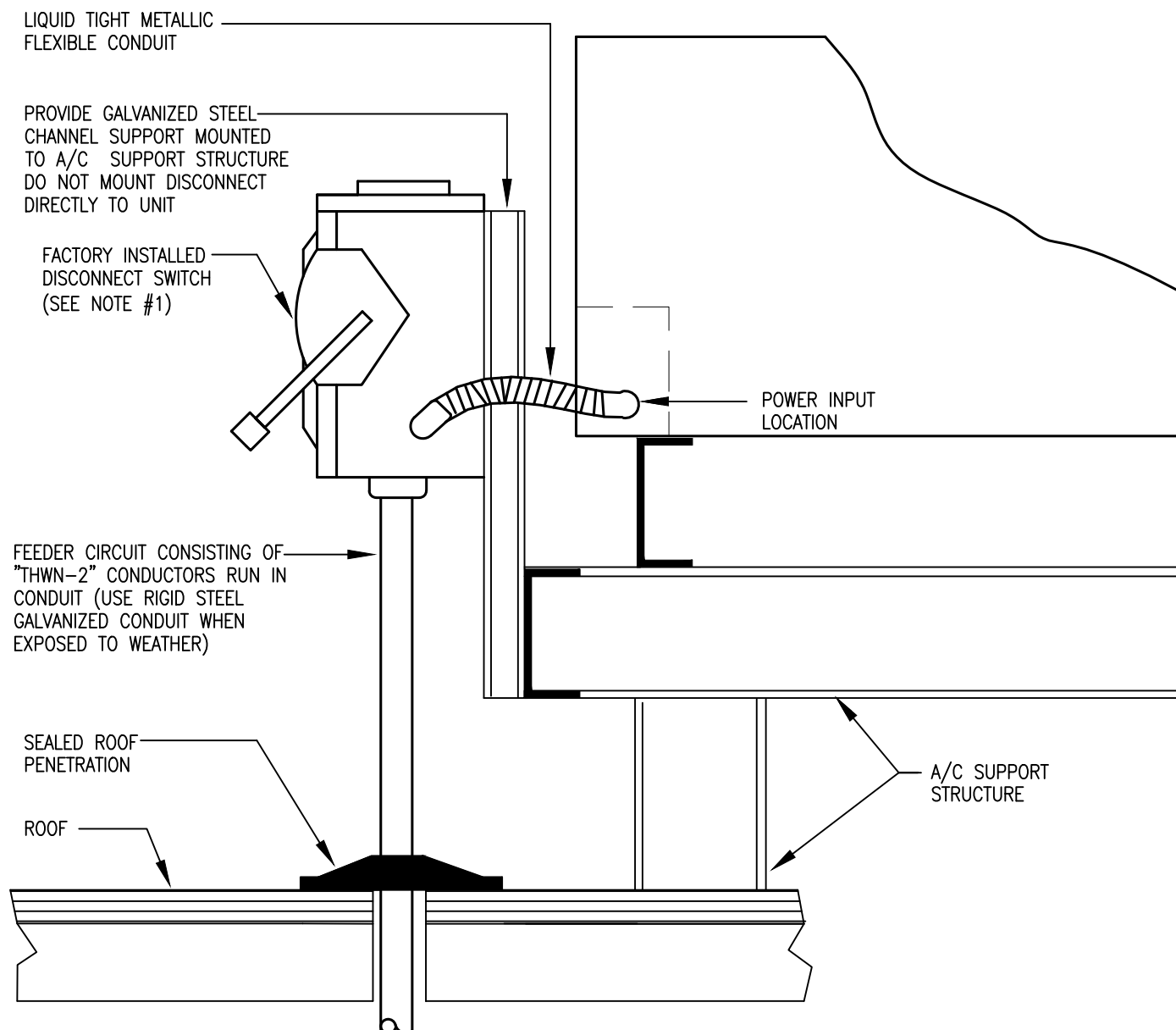
POLE FOUNDATION DETAIL
SCALE: NONE



SECTION "A-A" PRIMARY DUCT BANK DETAIL
SCALE: NONE

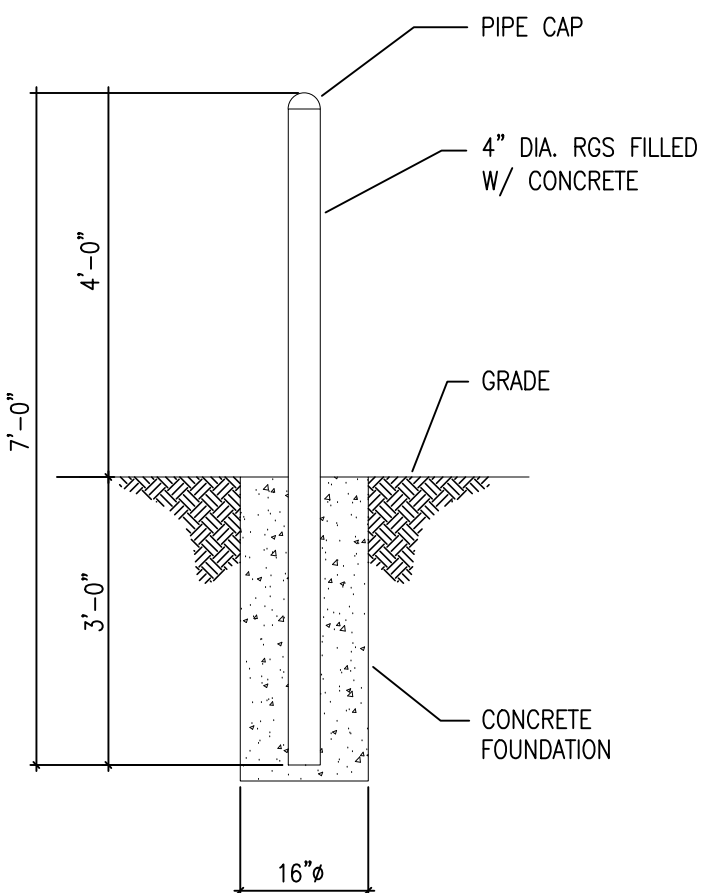


SECTION "B-B" SECONDARY DUCT BANK DETAIL
SCALE: NONE

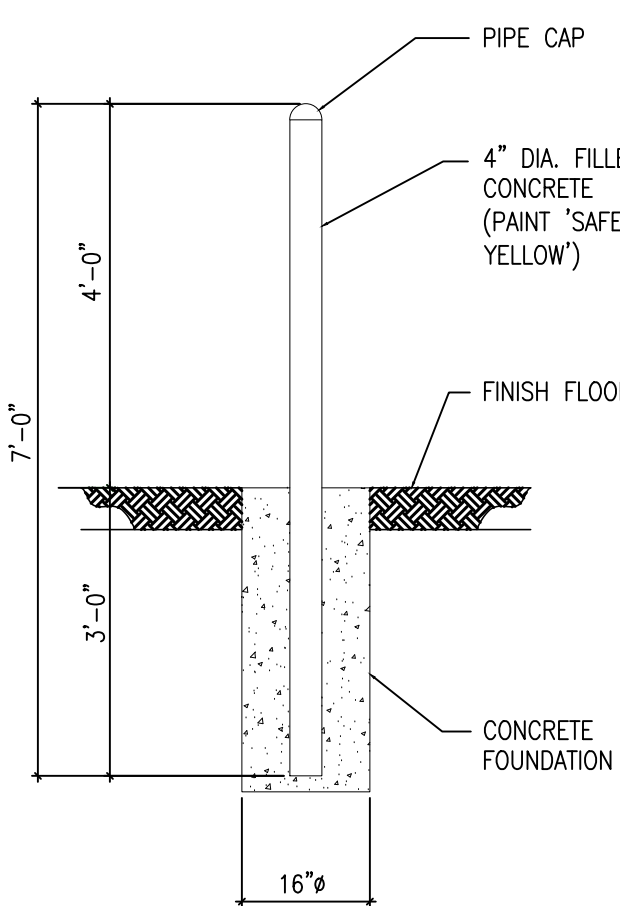


HVAC EQUIPMENT INSTALLATION ON ROOF
SCALE: NONE

- NOTES:
1. PROVIDE DISCONNECT SWITCHES FOR ALL HVAC EQUIPMENT UNLESS DISCONNECT IS FACTORY INSTALLED
 2. PROVIDE FUSED DISCONNECT SWITCH IF NAMEPLATE CALLS FOR FUSES OR HACR BREAKER AND HACR BREAKER IS NOT AVAILABLE IN THE REQUIRED AMPERE RATING.
 3. VERIFY NAME PLATE ELECTRICAL REQUIREMENTS AND RATINGS ON ALL HVAC EQUIPMENT IN FIELD PRIOR TO INSTALLATION OF ASSOCIATED POWER FEEDERS, OVERCURRENT DEVICES AND SWITCHES.



EXTERIOR BOLLARD DETAIL
SCALE: NONE



INTERIOR BOLLARD DETAIL
SCALE: NONE
NOTE:
1. ALL BOLLARDS ARE BY OTHERS.

SUBMITTALS		
NO.	DATE	DESCRIPTION
A	05.27.22	ISSUE FOR REVIEW
0	06.10.22	ISSUE FOR PERMIT